

## P1A pendant LinuxCNC driver Installation

1. Copy and move following files to LinuxCNC PC

### **Makefile**

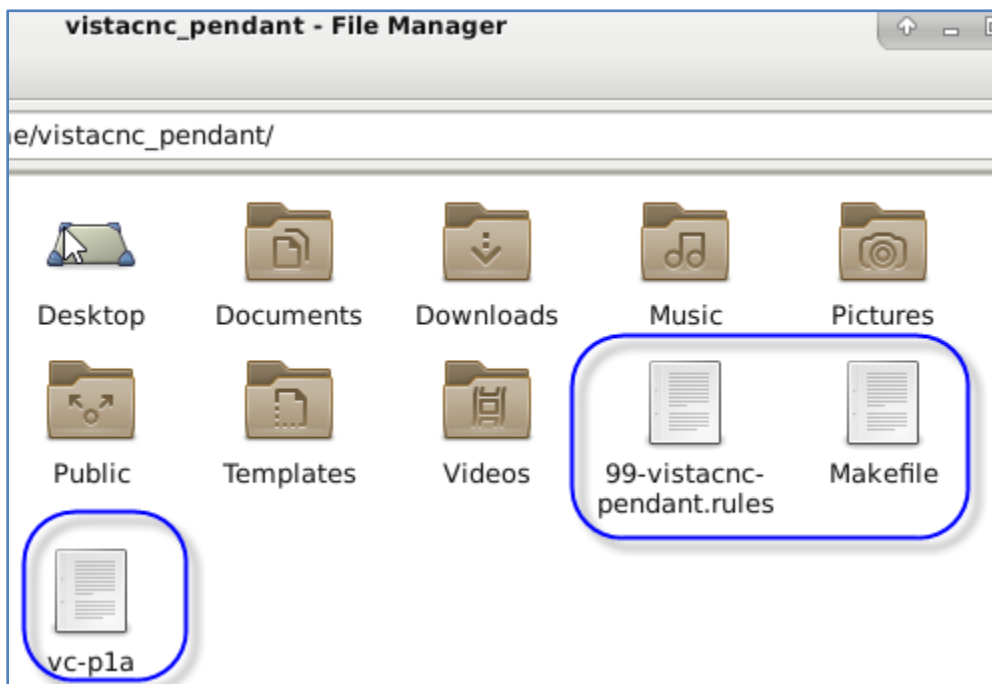
**vc-pla** (select 32 bit driver for 32 bit OS, and 64 bit driver for 64 bit OS)

**vc-pla.hal** (select 2.7 file for LinuxCNC 2.7 or lower, and 2.8 file for LinuxCNC 2.8 pre or higher)

**vc-pla-postgui.hal**

**99-vistacnc-pendant.rules**

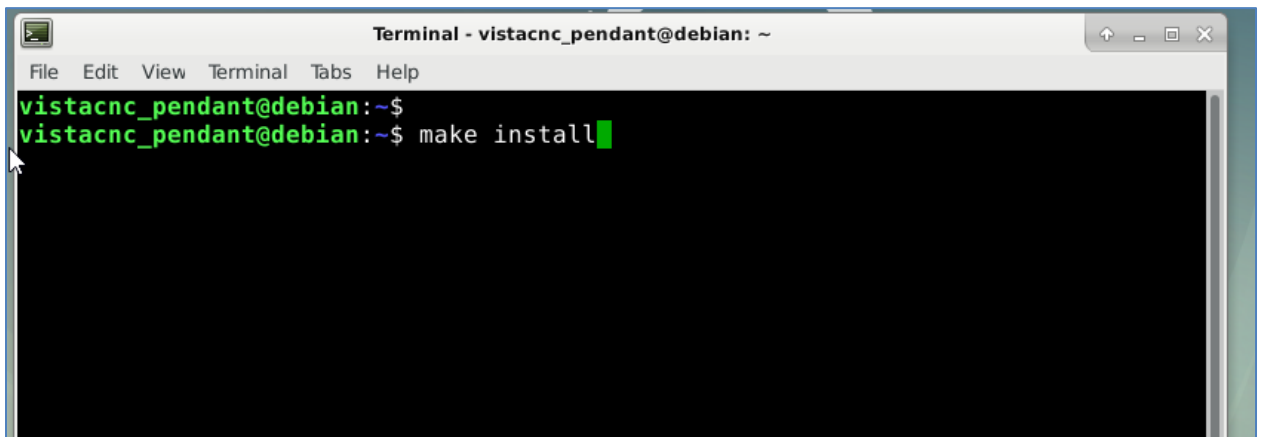
2. Put Makefile, vc-pla and 99-vistacnc-pendant.rules to home directory.



3. Open a terminal window, and at your home directory, type **make install** , and **return**. This will install

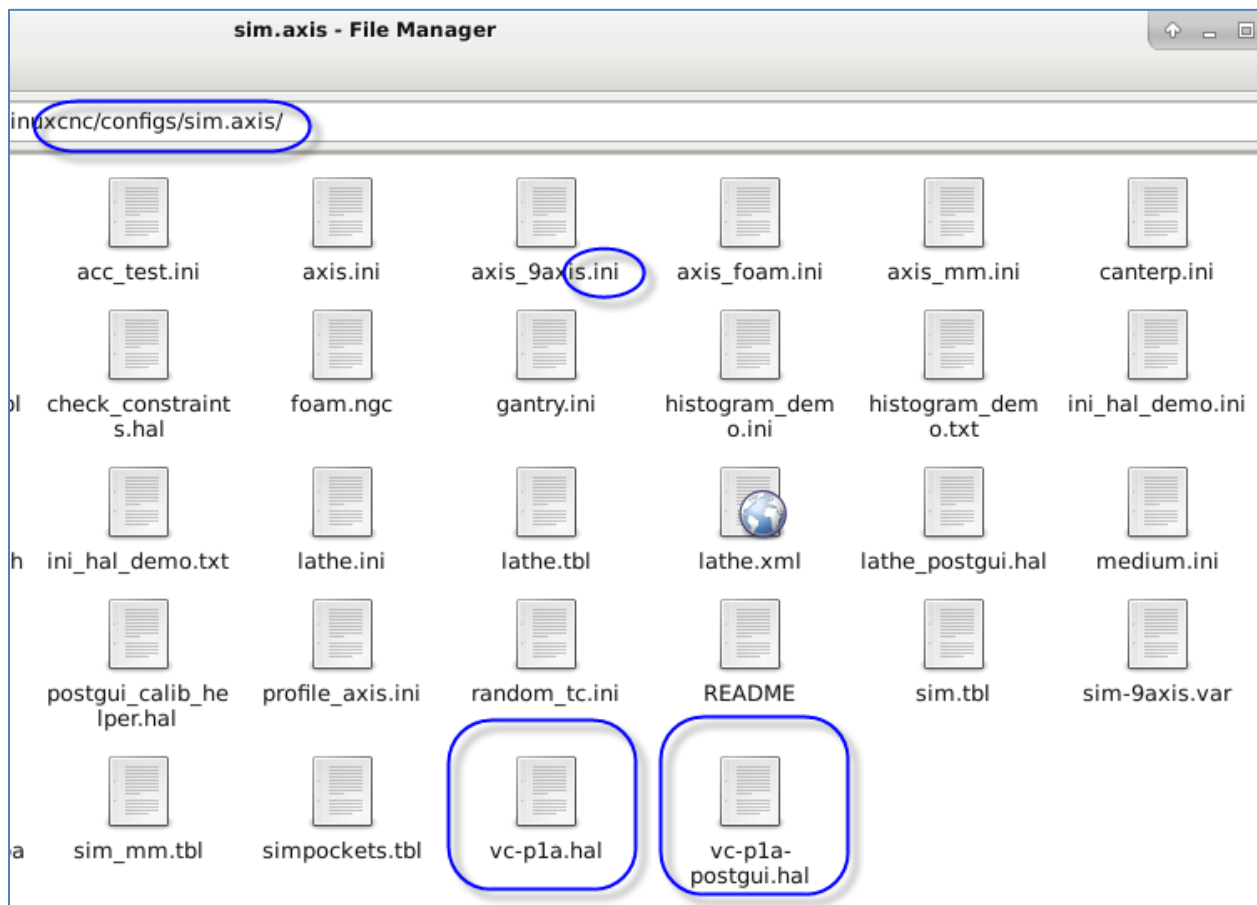
vc-pla to /usr/bin

99-vistacnc-pendant.rules to /lib/udev/rules.d



```
Terminal - vistacnc_pendant@debian: ~
File Edit View Terminal Tabs Help
vistacnc_pendant@debian:~$
vistacnc_pendant@debian:~$ make install
```

4. Put vc-pla.hal and vc-pla-postgui.hal to the directory in which the .ini file is located, normally it is under "your home directory"/linuxcnc/configs/...



5. Open and add following lines (**in bold font**) to `.ini` file:

```
[HAL]
HALFILE = my-mill.hal
HALFILE = custom.hal
HALFILE = vc-pla.hal
POSTGUI_HALFILE = custom_postgui.hal
POSTGUI_HALFILE = vc-pla-postgui.hal
HALUI = halui
```

```
[HALUI]
MDI_COMMAND=...
MDI_COMMAND=...
MDI_COMMAND=...
MDI_COMMAND=...
MDI_COMMAND=...
MDI_COMMAND=G10 L20 P1 X0
MDI_COMMAND=G10 L20 P1 Y0
MDI_COMMAND=G10 L20 P1 Z0
MDI_COMMAND=G10 L20 p1 A0
```

```

91 # Hardware Abstraction Layer section -----
92 [HAL]
93
94 # The run script first uses halcmd to execute any HALFILE
95 # files, and then to execute any individual HALCMD commands.
96 #
97
98 # list of hal config files to run through halcmd
99 # files are executed in the order in which they appear
100 HALFILE = core_sim9.hal
101 HALFILE = sim_spindle_encoder.hal
102 HALFILE = axis_manualtoolchange.hal
103 HALFILE = simulated_home.hal
104 HALFILE = locking_indexer.hal
105 #HALFILE = gamepad.hal
106 HALFILE = vc-pla.hal
107
108 # list of halcmd commands to execute
109 # commands are executed in the order in which they appear
110 #HALCMD =
111         save neta
112
113 # Single file that is executed after the GUI has started. Only supported b
114 # AXIS at this time (only AXIS creates a HAL component of its own)
115 #POSTGUI_HALFILE = test_postgui.hal
116 POSTGUI_HALFILE = vc-pla-postgui.hal
117
118 HALUI = halui
119
120 [HALUI]
121 MDI_COMMAND=...
122 MDI_COMMAND=...
123 MDI_COMMAND=...
124 MDI_COMMAND=...
125 MDI_COMMAND=G10 L20 P1 X0
126 MDI_COMMAND=G10 L20 P1 Y0
127 MDI_COMMAND=G10 L20 P1 Z0
128 MDI_COMMAND=G10 L20 P1 A0
129
130
131
132
133 # Trajectory planner section -----
134 [TRAJ]
135

```